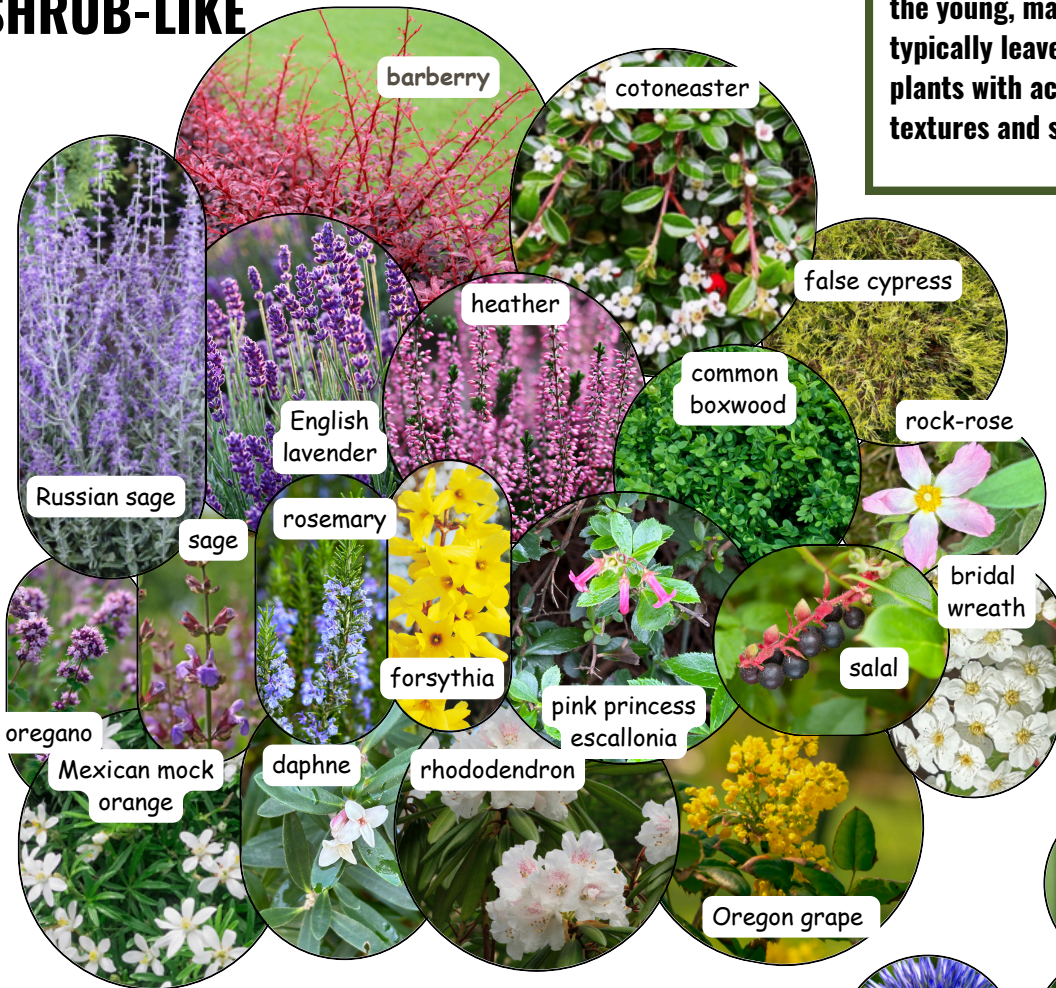


# ARE ANY PLANTS REALLY DEER PROOF?



Unfortunately, there are no deer proof plants. HOWEVER, there are several standbys that deer typically leave for you to enjoy...including the flowers! Deer, especially the young, may nibble new growth, but typically leave mature plants alone. Look for plants with acrid sap, prickles, thick or hairy textures and strongly scented foliage.

## SHRUB-LIKE

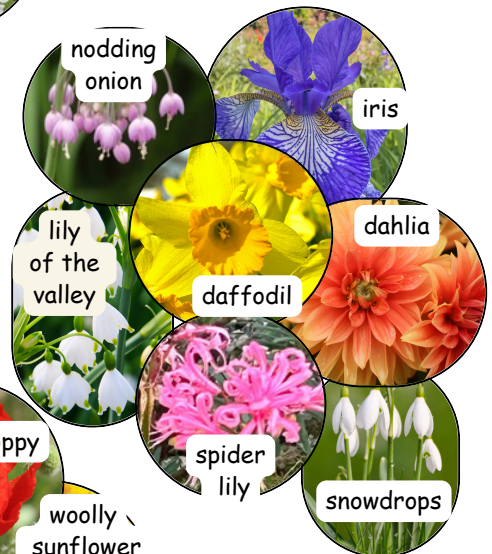


Click on the pictures for growing requirements.

## GROUND COVERS



## BULBS



## PERENNIALS & ANNUALS



### RESOURCES:

PHOTO Credits: CANVA & VIMGA Members

1. E-Flora BC/Electronic Atlas of the Flora of BC. [https://linnet.geog.ubc.ca/DB\\_Query/QueryForm.aspx](https://linnet.geog.ubc.ca/DB_Query/QueryForm.aspx)
2. KPU School of Horticulture/Plant Database. <https://plantdatabase.kpu.ca/#gsc.tab=0&gsc.sort=>
3. Master Gardeners Association of BC. *Deer resistant plants*. <https://www.mgabc.org/article/deer-resistant-plants>
4. North Carolina Extension Gardener Plant Toolbox. [https://plants.ces.ncsu.edu/find\\_a\\_plant/](https://plants.ces.ncsu.edu/find_a_plant/)
5. Satinflower Nurseries. *Deer resistant native plants*. <https://satinflower.ca/collections/deer-resistant-native-plants>
6. UoC/Master Garden Program. *Deer resistant plants*. [https://ucanr.edu/sites/EDC\\_Master\\_Gardeners/files/389660.pdf](https://ucanr.edu/sites/EDC_Master_Gardeners/files/389660.pdf) or <https://plantmaster.com/presents/plants.php?id=5f9c6e2d1ff70&plength=72>

© 2025 Vancouver Island Master Gardeners Association

Vancouver Island Master Gardeners Association  [VIMGA.org](http://VIMGA.org)



Deer are the only animals that grow antlers.

Common Name	Latin Name	Light	Water	Type	Other
Autumn crocus	<i>Colchicum autumnale</i>			rbtc	t
barberry	<i>Berberis spp. (e.g., B. thunbergii)</i>			dsh	
bee balm	<i>Monarda didyma</i>			a/p	
black-eyed susan	<i>Rudbeckia fulgida</i>			a/p	
blue lithospermum	<i>Lithodora diffusa</i>			grc	
bridal wreath spirea	<i>Spiraea prunifolia</i>			dsh	
candytuft	<i>Iberis sempervirens</i>			blegr	
catmint	<i>Nepeta x faassenii cvs.</i>			a/p	h
common blue fescue	<i>Festuca glauca</i>			gr	
common boxwood	<i>Buxus sempervirens</i>			blegr	
common thyme	<i>Thymus vulgaris</i>			grc	h
comos	<i>Cosmos bipinnatus</i>			a/p	
cotoneaster	<i>Cotoneaster dammeri</i>			blegr	
daffodil	<i>Narcissus spp.</i>			rbtc	
dahlias	<i>Dahlia x hybrida</i>			rbtc	
daphne/NOT D. laureola	<i>Daphne spp. (e.g., D.xTransatlantica 'Blafra')</i>			blegr	
dusty miller	<i>Jacobaea maritima</i>			a/p	
forget-me-not	<i>Myosotis sylvatica</i>			a/p	
globe thistle	<i>Echinops bannaticus</i>			a/p	
gold threadleaf false cypress	<i>Chamaecyparis pisifera 'Filifera Aurea'</i>			c	
heather	<i>Calluna vulgaris</i>			grc	
helleborus	<i>Helleborus spp. (e.g., H. niger)</i>			bleg	
iris	<i>Iris spp. (e.g., I. pallida 'Variegata')</i>			rbtc	
kinnikinnick	<i>Arctostaphylos uva-ursi</i>			grc	n
lavender	<i>Lavandula spp.</i>			blegr	h
lily-of-the-valley	<i>Convallaria majalis</i>			blegr	
Mediterranean spurge	<i>Euphorbia characias</i>			blegr	
Mexican mock orange	<i>Choisya ternata</i>			blegr	
nodding onion	<i>Allium cernuum</i>			blegr	
oregano	<i>Origanum vulgare</i>			hp	h
Oregon grape	<i>Berberis aquifolium</i>			blegr	n*
painted daisy	<i>Tanacetum coccineum subsp coccineum</i>			a/p	
pink princess escallonia	<i>Escallonia x exoniensis 'Frades'</i>			blegr	
poppies	<i>Papaver spp. (e.g., P. orientale)</i>			a/p	
rhododendron	<i>Rhododendron spp. (not Azalea spp.)</i>			blegr	n*
rock-rose	<i>Cistus spp. (e.g., C. lenis)</i>			blegr	
rosemary	<i>Salvia rosmarinus</i>			blegr	h
Russian sage	<i>Salvia yangii</i>			dsh	
salal	<i>Gautheria shallon</i>			blegr	n
salvia	<i>Salvia (e.g., S. microphylla)</i>			a/p	
showy forsythia	<i>Forsythia x intermedia cvs.</i>			dsh	
smoke bush	<i>Cotinus coggygria</i>			dsh	
snowdrop	<i>Galanthus nivalis</i>			rbtc	
spider lily	<i>Lycoris (e.g., L. radiata)</i>			rbtc	
stonecrop	<i>Sedum spp.</i>			grc	n*
winterberry	<i>Gaultheria procumbens</i>			grc	
wooly sunflower	<i>Eriophyllum lanatum</i>			a/p	n
yarrow	<i>Achillea spp.</i>			a/p	n*

This table was created using the Resources listed on the previous page.

**REMINDER:** All plants need care the first year of planting, even drought tolerant plants.

	full sun
	full sun or part shade
	full shade
	well drained dry
	well drained moist
a/p	annual/perennial
blegr	broadleaf evergreen
c	conifer
dsh	deciduous shrub
grc	ground cover
gr	grass
h	herb
hp	herbaceous perennial
n*	some native species
n	native species
rbtc	rhizome/bulb/tuber/corm
t	toxic to animals

**DISCLAIMER:**  
The information in this Info Sheet is science-based and accurate to the best of VIMGA's knowledge. Its use in the sole responsibility and liability of the users.